

# Waterproof Bearings

Designed for demanding environments



- /// Flange bearings
- /// Pillow block bearings
- /// Solid housings
- /// Easy assembly
- /// USDA accepted
- /// Food grade acc. to reg. (EC) No. 1935/2004
- /// NSF H1 registered grease
- /// Maintenance free bearings

**New Sizes**  
F4 and F2 Ø50 mm and Ø60 mm  
From Early 2014

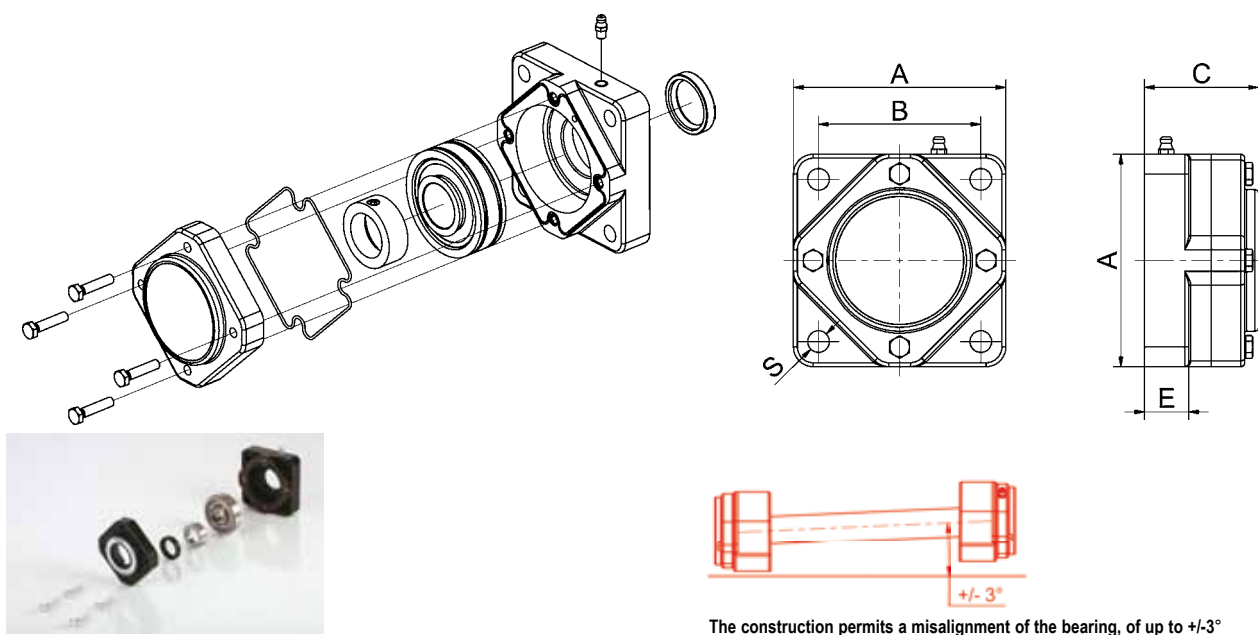
Vill du veta  
mer ring:  
019-12 77 96



## F4 4-holes Waterproof Spherical Flange Bearings F4



## F4 Drawings Download 2D and 3D drawings, brochures and other documentation from [www.nglager.se](http://www.nglager.se)



Type F4	Catalog No. closed cover	Catalog No. open cover	A	B	C	E	S
Ø20 mm	NG20F40	NG20F41	86	63.5	51	22.5	9
Ø25 mm	NG25F40	NG25F41	95	70	52	22.5	9
Ø30 mm	NG30F40	NG30F41	108	82.5	58	22.5	11
Ø35 mm	NG35F40	NG35F41	118	92	60	22.5	13.5
Ø40 mm	NG40F40	NG40F41	130	101.5	65	22.5	13.5
Ø50 mm	NG50F40	NG50F41	143	111	70	26.5	16
Ø60 mm	NG60F40	NG60F41	175	143	82	28.5	18

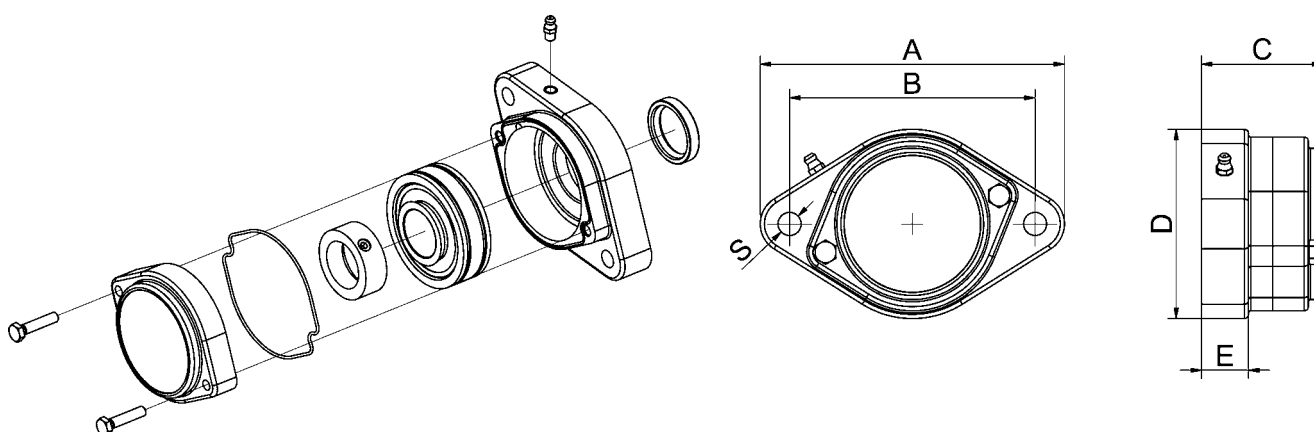
All data in millimeters

When ordering please use the catalog no.

## F2 2-holes Waterproof Spherical Flange Bearings F2



## F2 F2 Drawings Download 2D and 3D drawings, brochures and other documentation from [www.nglager.se](http://www.nglager.se)



The construction permits a misalignment of the bearing, of up to  $\pm 3^\circ$



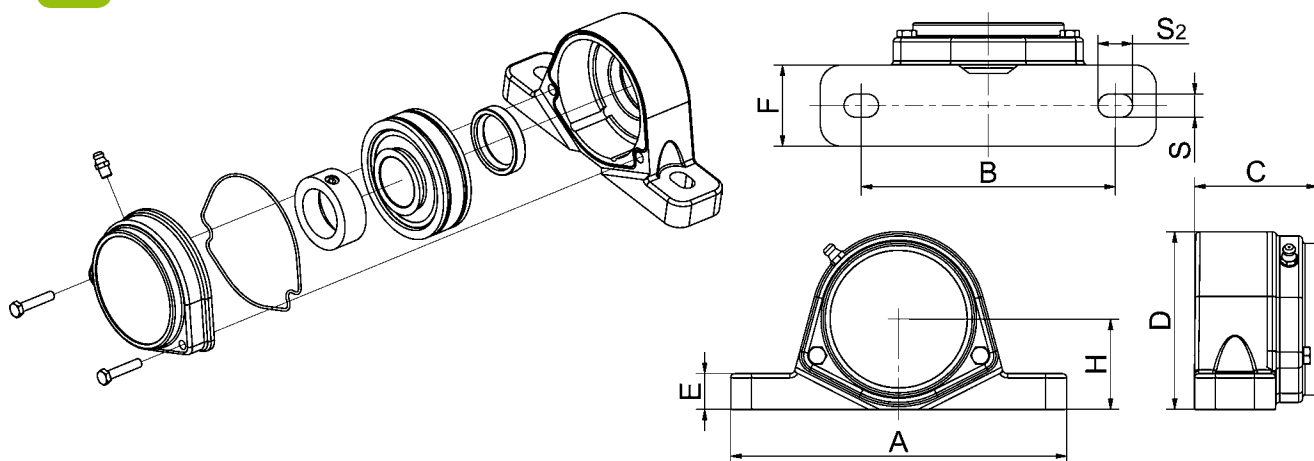
Type F2	Catalog No. closed cover	Catalog No. open cover	A	B	C	D	E	S
Ø20 mm	NG20F20	NG20F21	116	90	51	75	22.5	9
Ø25 mm	NG25F20	NG25F21	123	99	52	79	22.5	9
Ø30 mm	NG30F20	NG30F21	145	117	58	90	22.5	11
Ø35 mm	NG35F20	NG35F21	160	130	60	99	22.5	13.5
Ø40 mm	NG40F20	NG40F21	174	144	65	110	22.5	13.5
Ø50 mm	NG50F20	NG50F21	197	157	70	125	26.5	17.5
Ø60 mm	NG60F20	NG60F21	250	202	82	152	28.5	22

All data in millimeters When ordering please use the catalog no.

## SF2 2-holes Waterproof Spherical Pillow Block Bearings SF2



## SF2 SF2 Drawings Download 2D and 3D drawings, brochures and other documentation from [www.wwww.nglager.se](http://www.wwww.nglager.se)



The construction permits a misalignment of the bearing, of up to  $\pm 3^\circ$



Type SF2	Catalog No. closed cover	Catalog No. open cover	A	B	C	D	E	F	H	S	S2
Ø20 mm	NG20SF20	NG20SF21	127	95	52	67	14	33.5	33.3	9	13.5
Ø25 mm	NG25SF20	NG25SF21	140	105	53	73	15	34.5	36.5	9	13.5
Ø30 mm	NG30SF20	NG30SF21	160	121	59	85	17	38.5	42.9	11	16.5
Ø35 mm	NG35SF20	NG35SF21	167	127	60	93	18	38.5	47.6	13	19.5
Ø40 mm	NG40SF20	NG40SF21	184	137	66	100	18	42.5	49.2	13	19.5

All data in millimeters

When ordering please use the catalog no.



**S2**

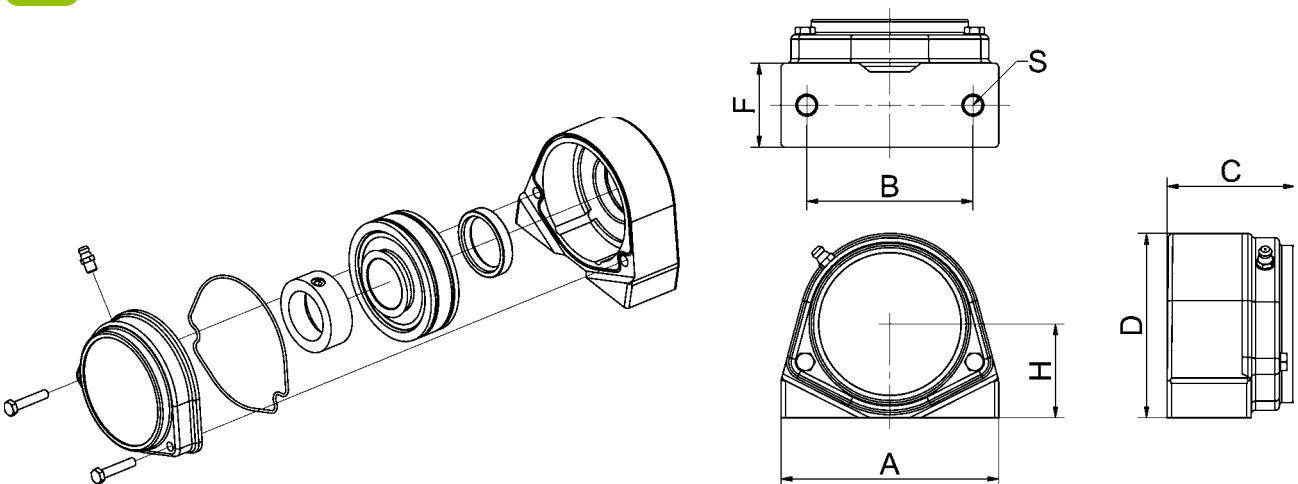
## 2-holes Waterproof Spherical Pillow Block Bearings S2 With Thread



**S2**

### S2 Drawings

Download 2D and 3D drawings, brochures and other documentation from [www.nglager.se](http://www.nglager.se)



The construction permits a misalignment of the bearing, of up to  $\pm 3^\circ$



Type S2	Catalog No. closed cover	Catalog No. open cover	A	B	C	D	F	H	S
Ø20 mm	NG20S20	NG20S21	79	50.8	52	67	33.5	33.3	M8
Ø25 mm	NG25S20	NG25S21	87	50.8	53	73	34.5	36.5	M8
Ø30 mm	NG30S20	NG30S21	100	76.2	59	85	38.5	42.9	M10
Ø35 mm	NG35S20	NG35S21	110	82.6	60	93	38.5	47.6	M12
Ø40 mm	NG40S20	NG40S21	122	88.9	66	100	42.5	49.2	M12

All data in millimeters

When ordering please use the catalog no.



## Stainless Steel Machine Feet NG



The machine feet are available with or without floor anchoring holes to prevent creeping. The embedded rubber, has a rounded and hygienic design which makes it easy to clean. Machine feet can cope with up to 6° slopes on floors and equipment.

### Stainless Steel Specifications:

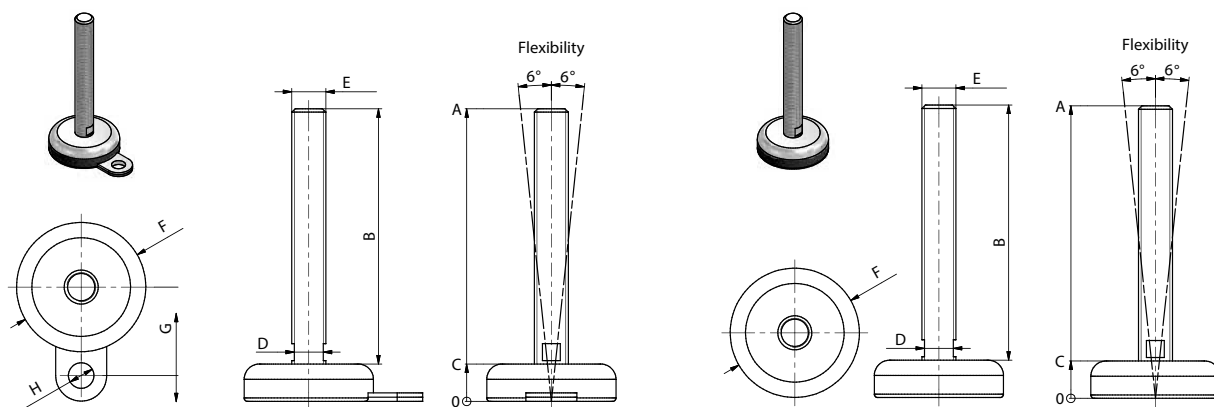
- /// Stainless steel: AISI 304 (A2)
- /// Tensile strength (Rm): 345-545 N/mm<sup>2</sup>
- /// Application temperature max: 250°C
- /// High chemical and corrosion resistance

### NBR72 Rubber Specifications:

- /// Temperature range: -15°C to +95°C
- /// Colour: Black
- /// Shore A hardness: 70-75
- /// High chemical resistance to commonly applied cleaning agents



## Drawings with and without Floor Anchoring Holes



Type NG machine feet	Catalog No. without floor anchoring holes	Catalog No. with floor anchoring holes	A	B	C	D	E	F	G **	H **	Max load approx.
NG-50-12-50	KI840010	n/a	70	50	20	10	M12	Ø50	n/a	n/a	275 kg
NG-50-12-100	KI840020	n/a	120	100	20	10	M12	Ø50	n/a	n/a	275 kg
NG-76-12-150	KI840030	n/a	172	150	22	10	M12	Ø76	n/a	n/a	850 kg
NG-76F-12-150 *	n/a	KI840040	172	150	22	10	M12	Ø76	52	Ø15	850 kg
NG-76-16-150	KI840050	n/a	172	150	22	13	M16	Ø76	n/a	n/a	900 kg
NG-76F-16-150 *	n/a	KI840060	172	150	22	13	M16	Ø76	52	Ø15	900 kg
NG-76-20-150	KI840070	n/a	172	150	22	17	M20	Ø76	n/a	n/a	975 kg
NG-76F-20-150 *	n/a	KI840080	172	150	22	17	M20	Ø76	52	Ø15	975 kg

\* The letter "F" indicates floor anchoring holes. When ordering please use the catalog no.

\*\* Only for floor anchoring holes.

All measurements in millimeters.

# Waterproof Flange Bearing Design

NG flange bearings are designed for the food industry and other industries continuously making heavier demands on the material resistance and a design easy-to-clean. In order to reduce the risk of bacteria growth, this design is characterised by smooth surfaces and rounded corners.

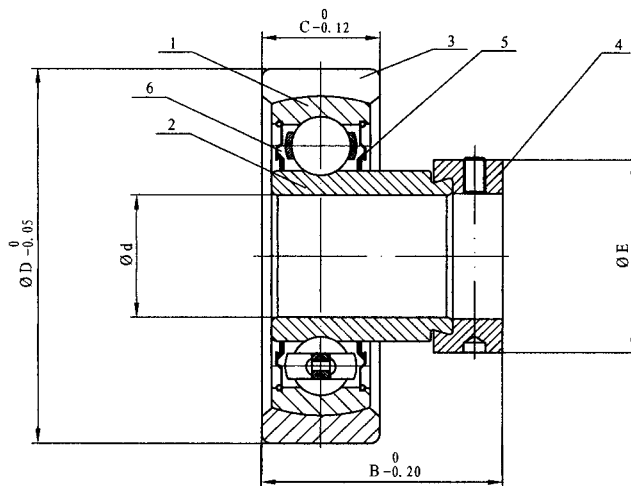
The protection is IP66/IP67 which ensure that the products can be cleaned with for instance water under pressure from all directions. An oil seal ring with a stainless steel spring, ensuring that water cannot penetrate the housing. The bearings are maintenance free and resistant to all cleaning products and to most chemicals.

## Features:

- /// Compact and strong flange houses, with the cover bolted to the bearings housing
- /// Made by Dupolit, which is of extreme stability and strength
- /// Stainless steel grease nipple for optimal food grade grease filling, preventing condensation in the bearing housing
- /// The flange housing is fitted with a spherical PE lifetime lubricated ball bearing with eccentric locking collar
- /// Self-aligning
- /// Measurements are similar to market standards
- /// The flange housing can be mounted in all angles
- /// Stainless spherical radial insert bearings for an easy and precise assembly
- /// The flange housing is heat resistant from -30 to +100°C
- /// Possible private label
- /// Insert bearings are lubricated with NSF H1 registered grease that meets requirements like DIN 51825, Halal, Kosher etc.
- /// The flange bearings are USDA accepted and meets the NSF/ANSI/3-A 14159-1-2010 standard
- /// Food grade according to the framework of regulation (EC) No. 1935/2004



## Technical Specifications and Drawings



### NG radial insert bearing PE with:

- /// Stainless steel inner ring
- /// Adjustable stainless cover ring
- /// Stainless steel eccentric collar
- /// Stainless steel P-sealings



Technical specifications	PE 20	PE 25	PE 30	PE 35	PE 40
d [mm]	20.00	25.00	30.00	35.00	40.00
D [mm]	55.00	62.00	72.00	80.00	90.00
B [mm]	31.50	32.00	37.20	40.00	45.20
C [mm]	16.00	17.00	21.00	21.00	25.00
E [mm]	33.00	37.50	44.00	51.00	58.00
m [kg]	0.30	0.38	0.54	0.70	0.94
Cr [kN]	9.88	10.78	14.97	19.75	22.71
Cor [kN]	6.20	6.98	10.04	13.67	15.94

m (mass); Cr (basic dynamic load, radial); Cor (basic static load, radial)

Technical specifications	
1. Outer ring	95Cr18 (440B) (HRC 58-62)
2. Inner ring	95Cr18 (440B) (HRC 58-62)
3. Cover ring	95Cr18 (440B) (HRC 58-62)
4. Eccentric collar	SUS304 (stainless)
5. Sealings	NBR + SUS304 (stainless)
6. Grease	FM 222 Mobil grease
Operating temperature: -30°C to +100°C	